

Nextech Practice Management SPEX On Demand Installation Guide

QUICK GUIDE SUMMARY

- A. Download the SPEX files from your account on Frames Data Online.
- B. Extract the files from the zip archive
- C. Browse to the extracted folder in Nextech and import

Nextech SPEX On-Demand Installation Guide

SPEX Download & Extraction

1. Go to www.framesdata.com and log in using your username and password.
2. Click the **Download Now** button located below the navigation bar at the top of the page.
*If you do not see it, click the homepage button to take you to the direct URL: <https://www.framesdata.com/fdol/>

Frames Data[®] ONLINE

Welcome !

Subscribe Renew My Frames Data Logout

FrameSearch PriceSearch Directory Support Resources

my frame GALLERY by Frames Data Your Online Solution for In-Store Sales.

Product Name: SPEX UPC Expire Date: JUN 19

Download Now

Click to go to Download Center

FrameSearch PriceSearch Resources

Need Help ?

Featured Brands

3. Once you click **Agree** in the *Frames Data Terms & Conditions* window, you will be directed to the Download Center. Click the **Download Now** button again.

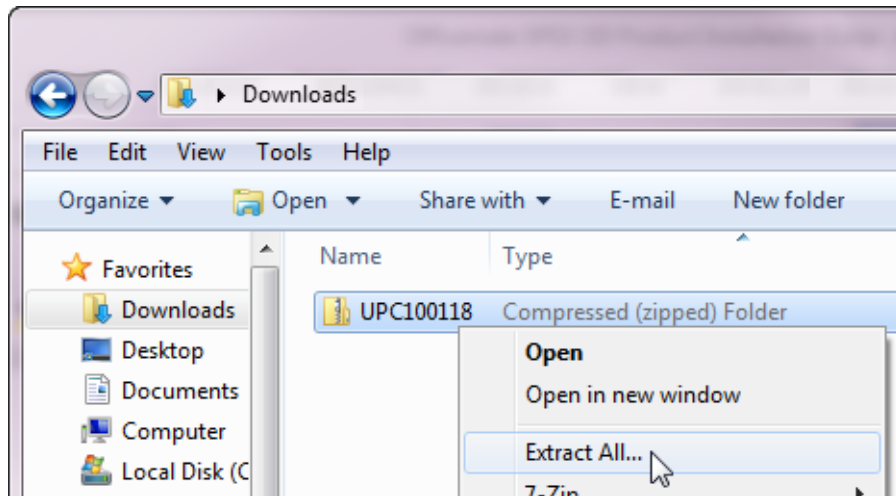
Download Center

| Product Name | Expire Date | Issue Available | File Name |
|--------------|-------------|-----------------|---------------|
| SPEX UPC | JUN 19 | October 2018 | UPC100118.zip |

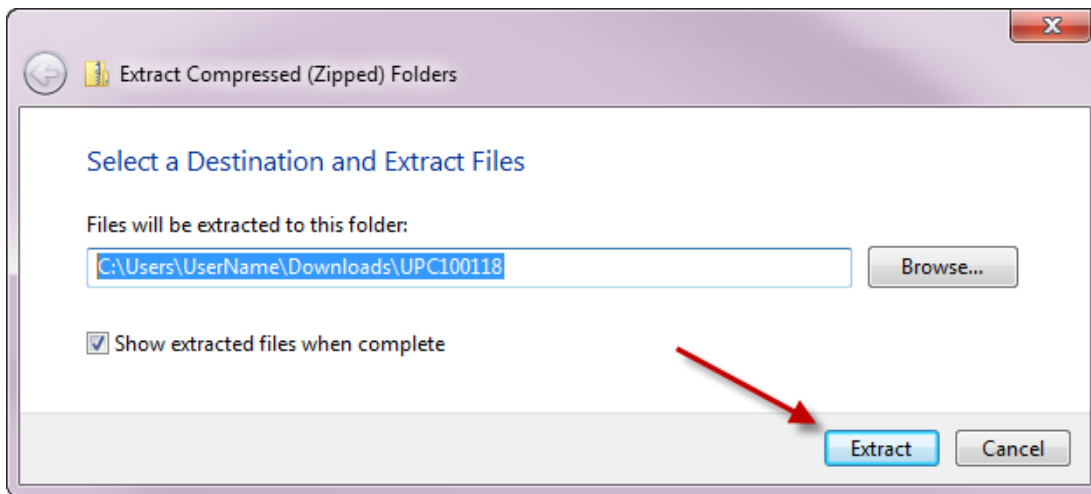
Click to download SPEX files

Download Now

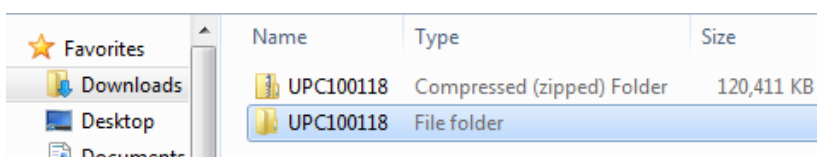
- The zip file will save to your *Downloads* folder on your computer. (If it does not start automatically, right-click and click **Save**, **Save As**, or **Save File**, depending on what kind of browser you use.)
- In your computer files program (*Windows Explorer* or *File Explorer*), browse to your *Downloads* folder and find the file *UPCMM01YY.zip* (*MM* referring to the current month and *YY* the current year). Do not open it or the next step will not look correct.
- Right-click on the file name and click **Extract All**.



- When the extract window appears, click **Extract**.

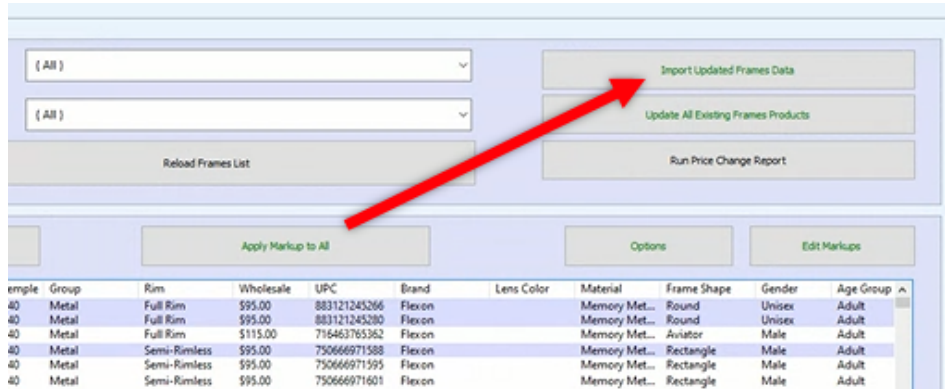


- This will create a new folder named *UPCMM01YY* in your *Downloads*, but it will be a regular file folder, rather than a compressed zip file.
- This file folder is the one that we will browse to in Nextech. To make it easier to find, you may wish to copy it to your desktop.



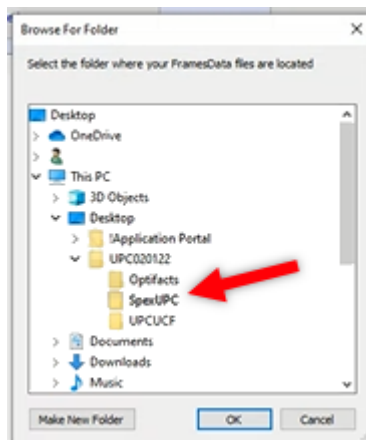
Import the Data

1. Open Nextech
2. In your inventory, click the "Import Updated Frames Data" option in the top right:



3. In the "Browse for Folder" window, browse to the file path of the UPCMM01YY folder that you extracted.

- a) Locate the correct UPCMM01YY file location and expand it to see the folders.
- b) Select the SpexUPC folder underneath
- c) Save this path by clicking OK



For example, if you left the extracted folder in the *Downloads*, your file path to find the folders might be: [username]\downloads\UPC090122\SpexUPC

4. Wait for the import process to finish.

Congratulations! You have now successfully loaded Frames Data SPEX On-Demand into Nextech.

If you have any questions please contact technical support at techsupport@framesdata.com or by phone at 1-800- 821-6069 ext.1.

For information about using or purchasing an inventory solution from Nextech, visit: www.nextech.com